

# COLLEMBOLA

order *Symphyleona*

Collembola (Hexapoda) are small arthropods usually living in the soil. The order of Symphypleona includes species identifiable by their globular body and sometimes extravagant ornamentation despite their small size. That of the species presented here is between 0.30 mm and 2.8 mm. Collembolles occupy a wide range of ecological niches allowing them to be seen everywhere and throughout the year. It is necessary to vary the habitats prospected and play seasons. To learn more about their phenology (<http://bit.ly/2B2VcSZ>). All images presented here are made in situ with specimens observed in France over a period of one year (2017-2018).



*Fasciosminthurus dictyostigmatus*



*Sminthurides schoetti*



*Fasciosminthurus circumfasciatus*  
ssp. *maculatus*



*Sminthurides malmgreni*  
forma *principalis*



*Deuterostminthurus pallipes*  
var. *bellingeri*



*Allacma gallica*



*Fasciosminthurus virgulatus*



*Fasciosminthurus saportae*



*Lipothrix lubbocki*



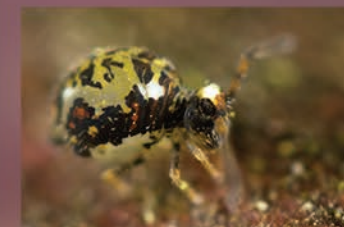
*Sminthurides schoetti*  
var. *bilineatus*



*Cassagnaudiella canigouensis*



*Deuterostminthurus bicinctus*  
var. *flavus*



*Katiannidae* genus nov. 2 sp. nov



*Dicyrtomina signata*



*Allacma fusca* var. *usignata*



*Deuterostminthurus pallipes*



*Pygmarrhopalites pygmaeus*-group



*Sminthurus leucomelanus*



*Sminthurinus aureus*  
forma *maculatus*



*Heterostminthurus insignis*  
form. *maculatus*



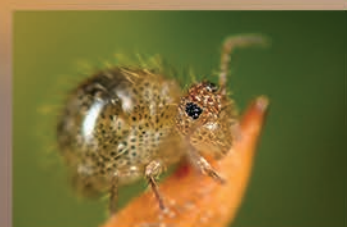
*Sminthurides parvulus*



*Sminthurides malmgreni*  
form. *dorsomaculatus*



*Sminthurus hispanicus*



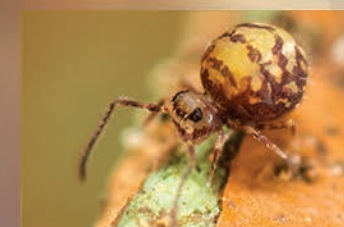
*Allacma fusca* var. *pustulata*



*Caprainea marginata*



*Heterostminthurus claviger*



*Sminthuridae* (unidentified)



*Stenacidia violacea* Female



*Sminthurus viridis* ssp.  
*cinereoviridis*



*Deuterostminthurus bicinctus*  
form. *flavus* (Dark)



*Fasciosminthurus circumfasciatus*  
ssp. *maculatus* male



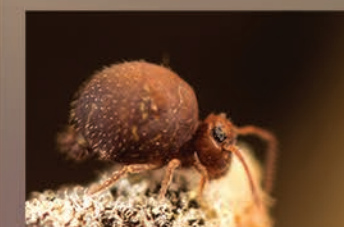
*Heterostminthurus insignis*  
form. *marmoratus*



*Dicyrtomina violacea*



*Sminthurinus igniceps*



cf. *Bourletiella hortensis*



*Sphaeridia pumilis*



*Cassagnaudiella gamae*



*Allacma fusca*



*Pygmarrhopalites principalis*



*Sminthurus* nr. *wahlgreni*



*Sminthurus* sp.



*Sminthurides signatus*